

Make a Pop-Up Christmas Tree Card



You will need:

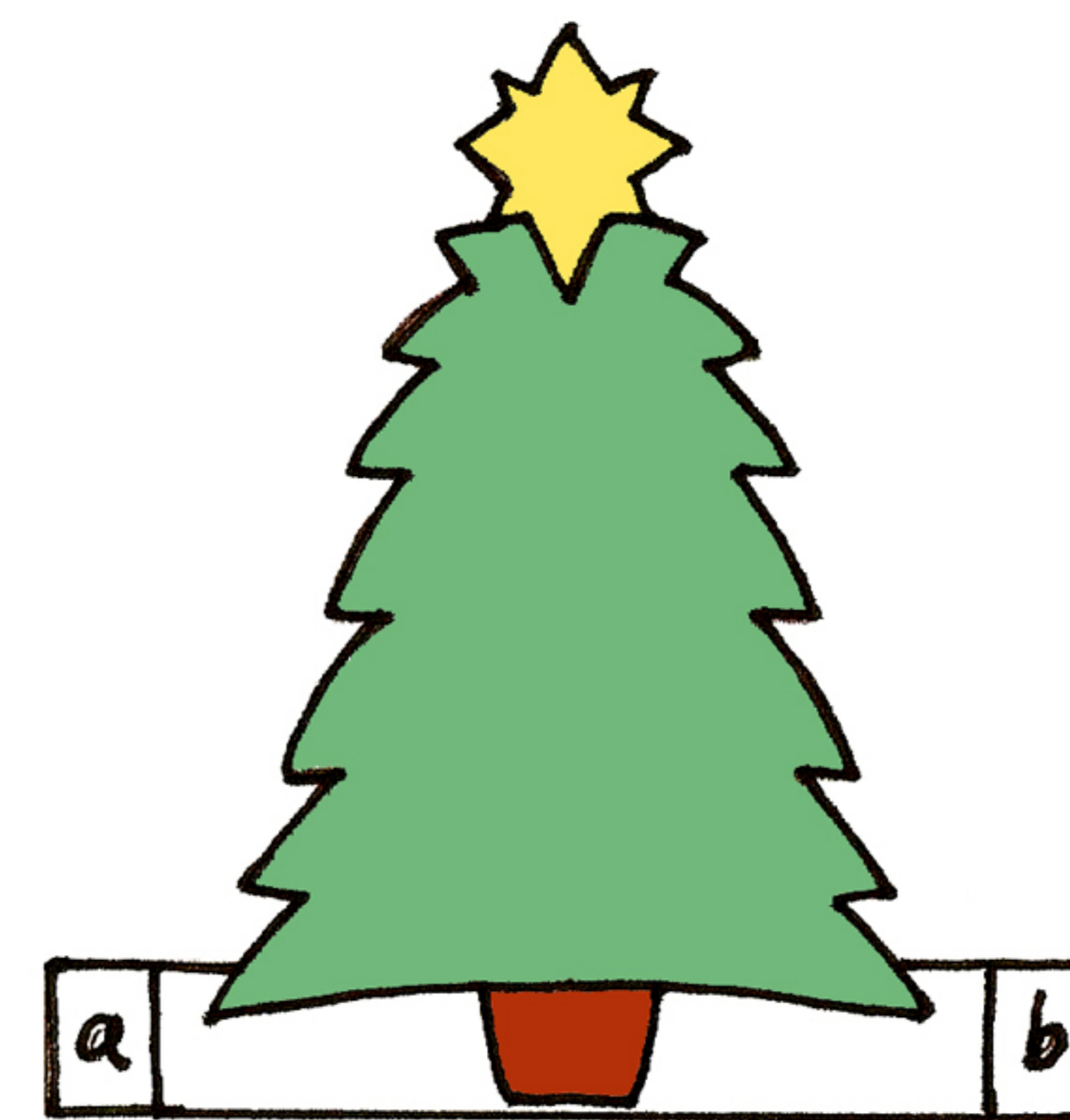
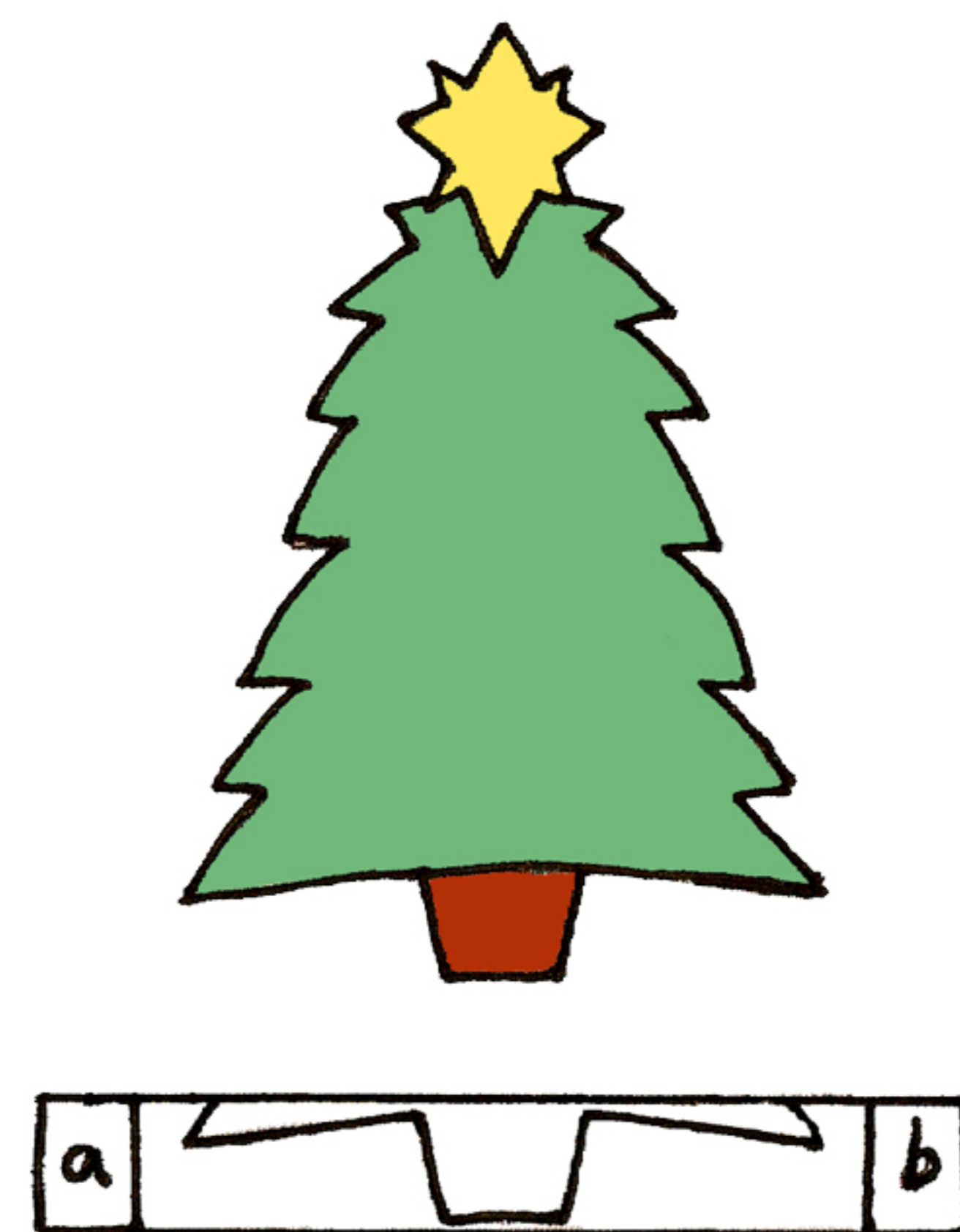
- ★ Templates 1 and 2
- ★ Scissors
- ★ Glue stick
- ★ Pens and pencils for decoration.

★ Step 1 - Colour in and decorate the Christmas tree drawing on template 1.

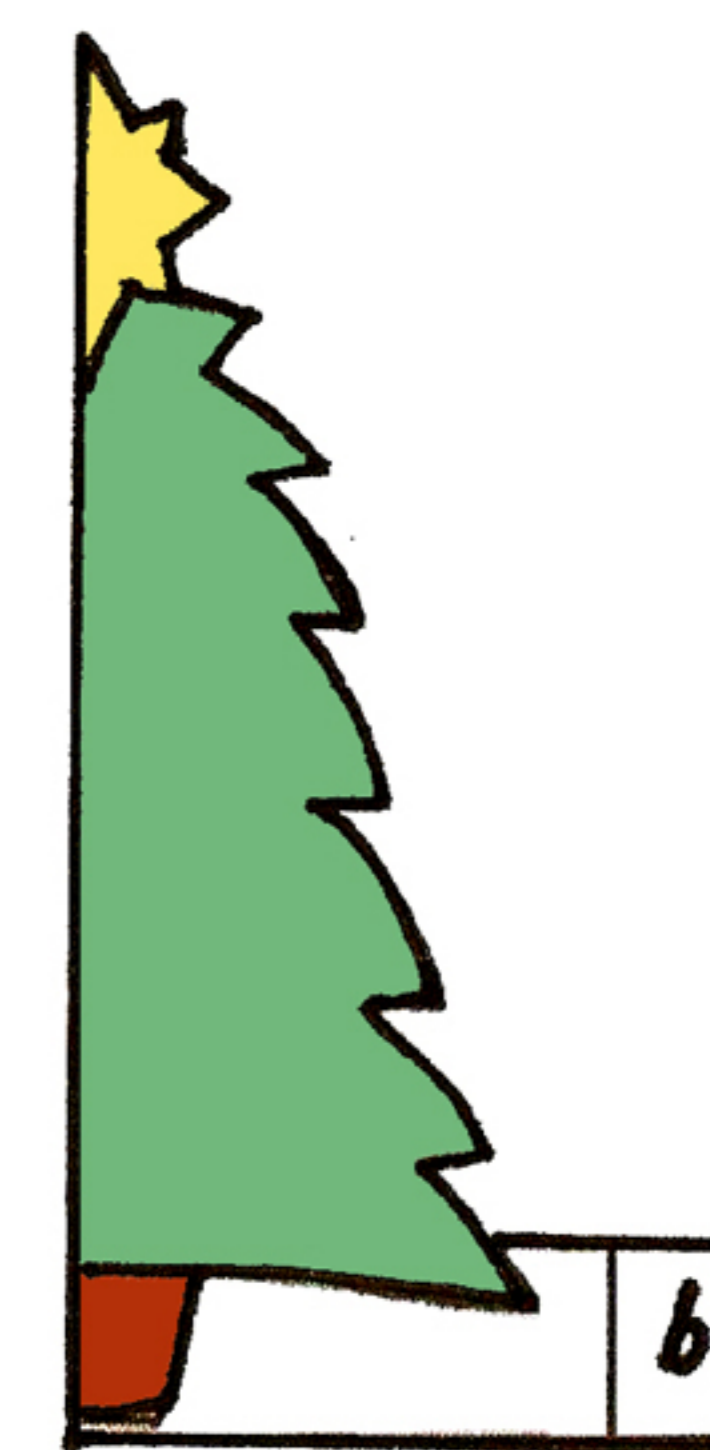
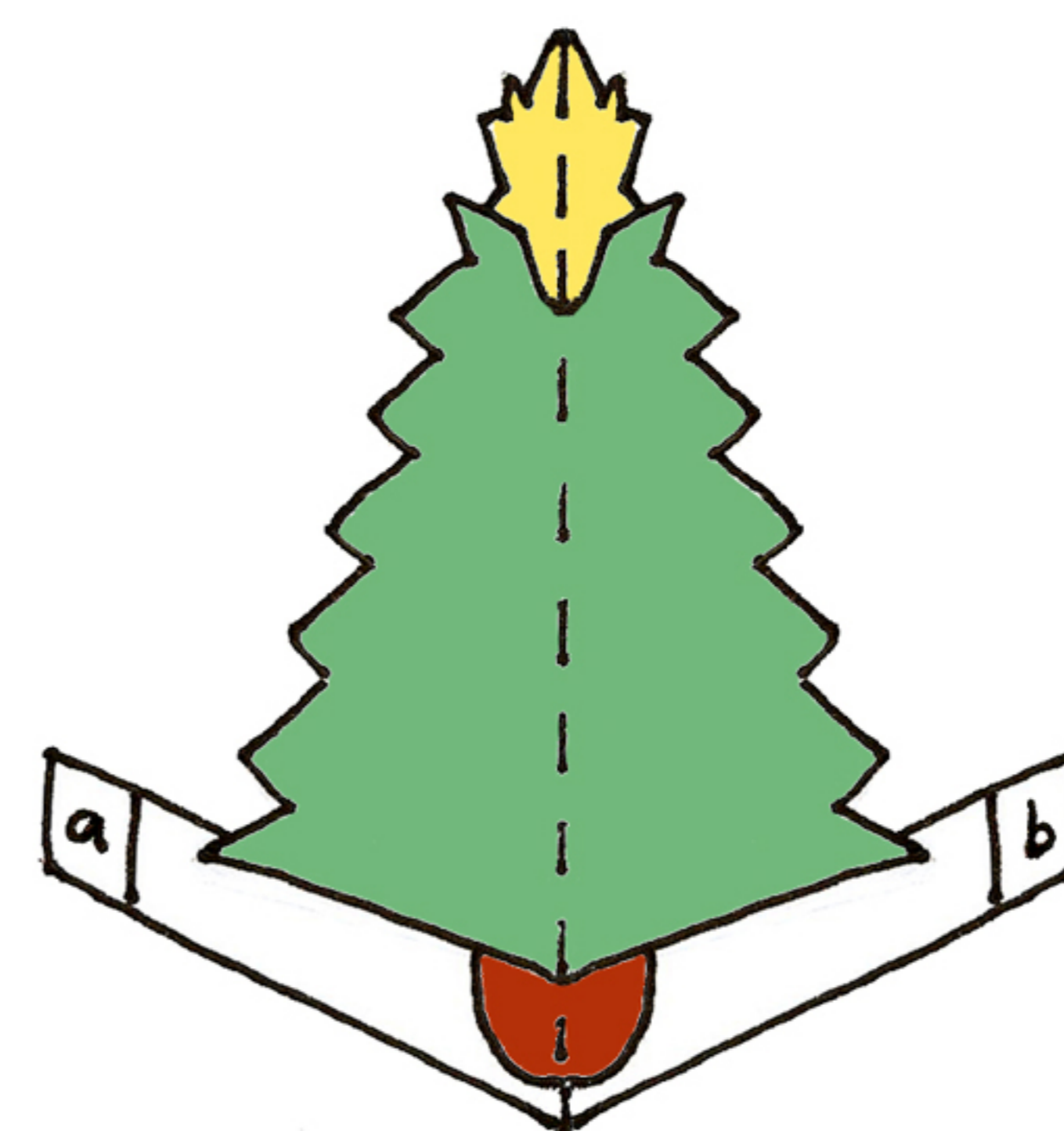
★ Step 2 - Carefully cut out the tree, and the pop-up stand on the same template page.



Step 3 - Glue your Christmas tree to the pop-up stand, try and match the bottom of the tree to the lines on the stand.



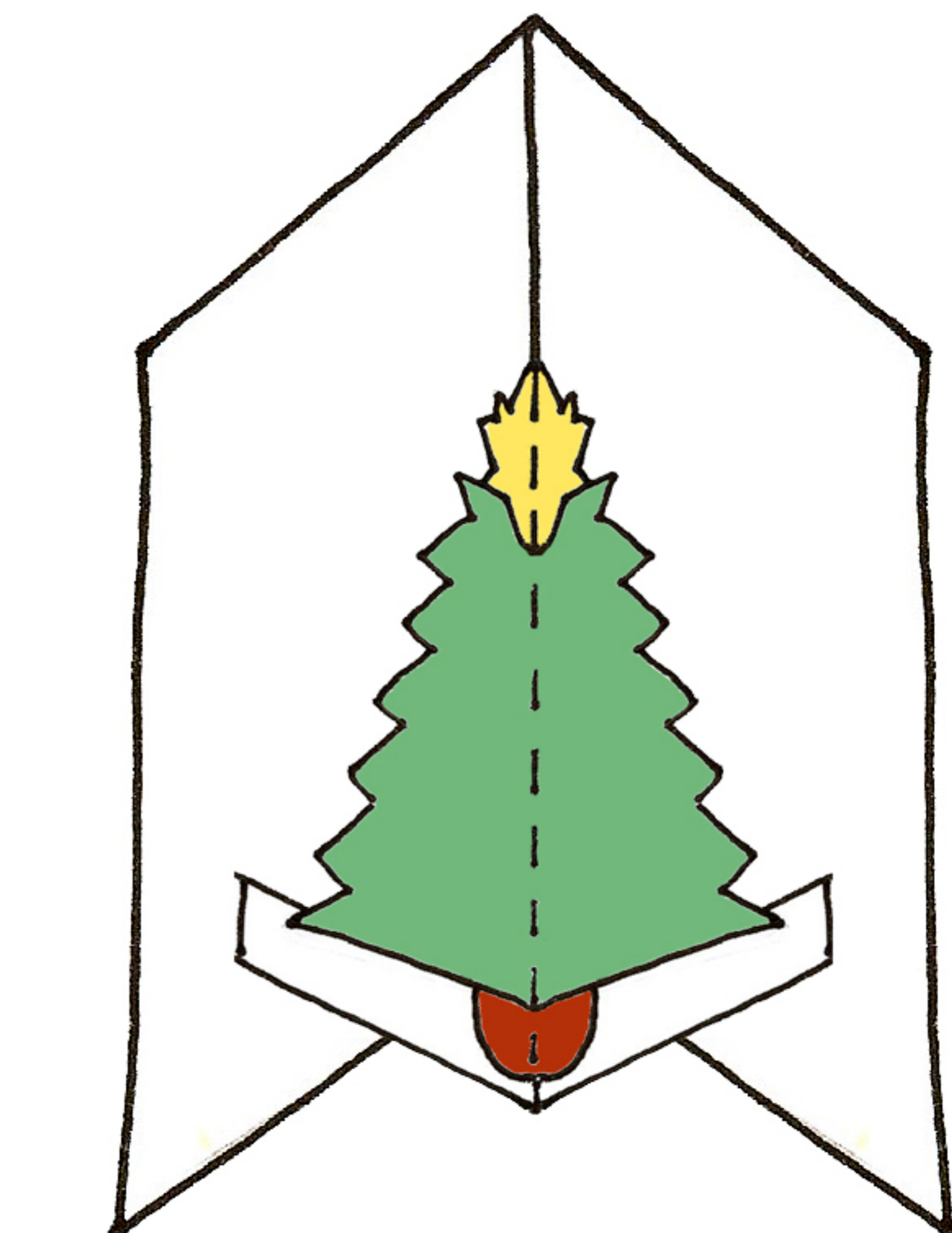
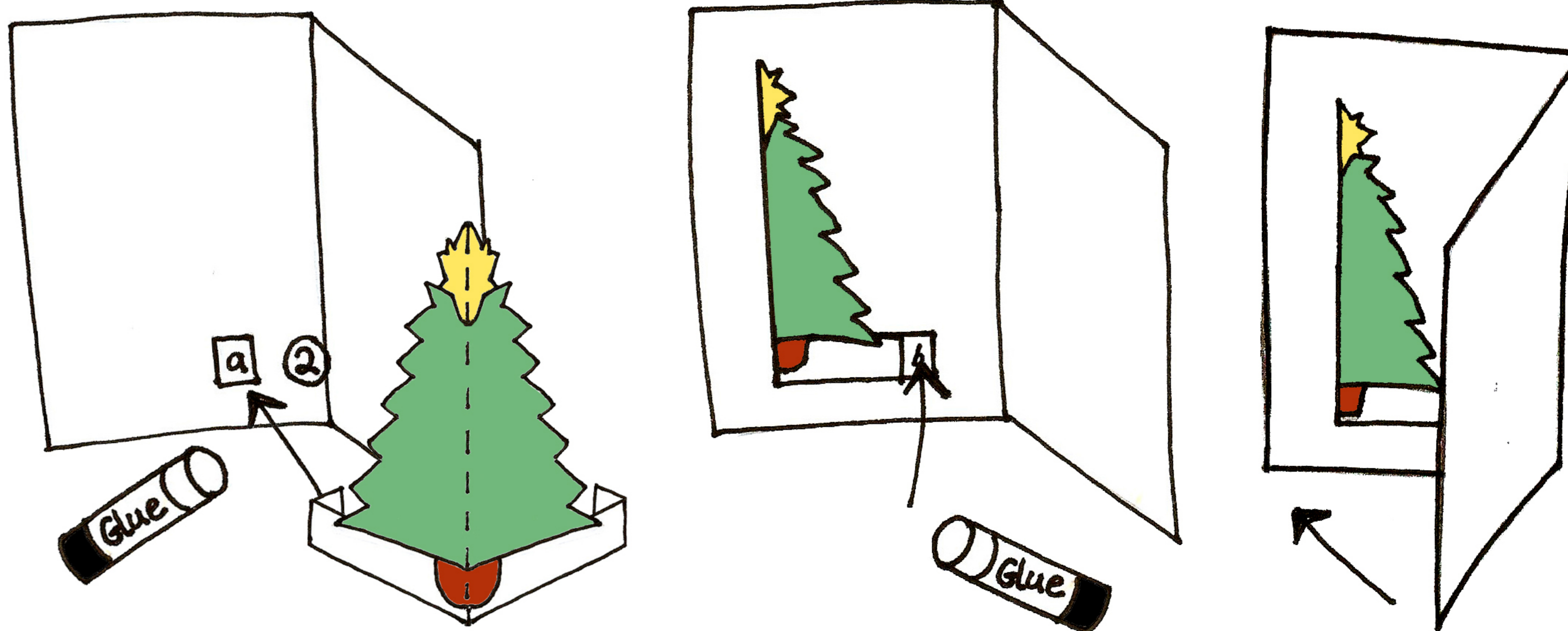
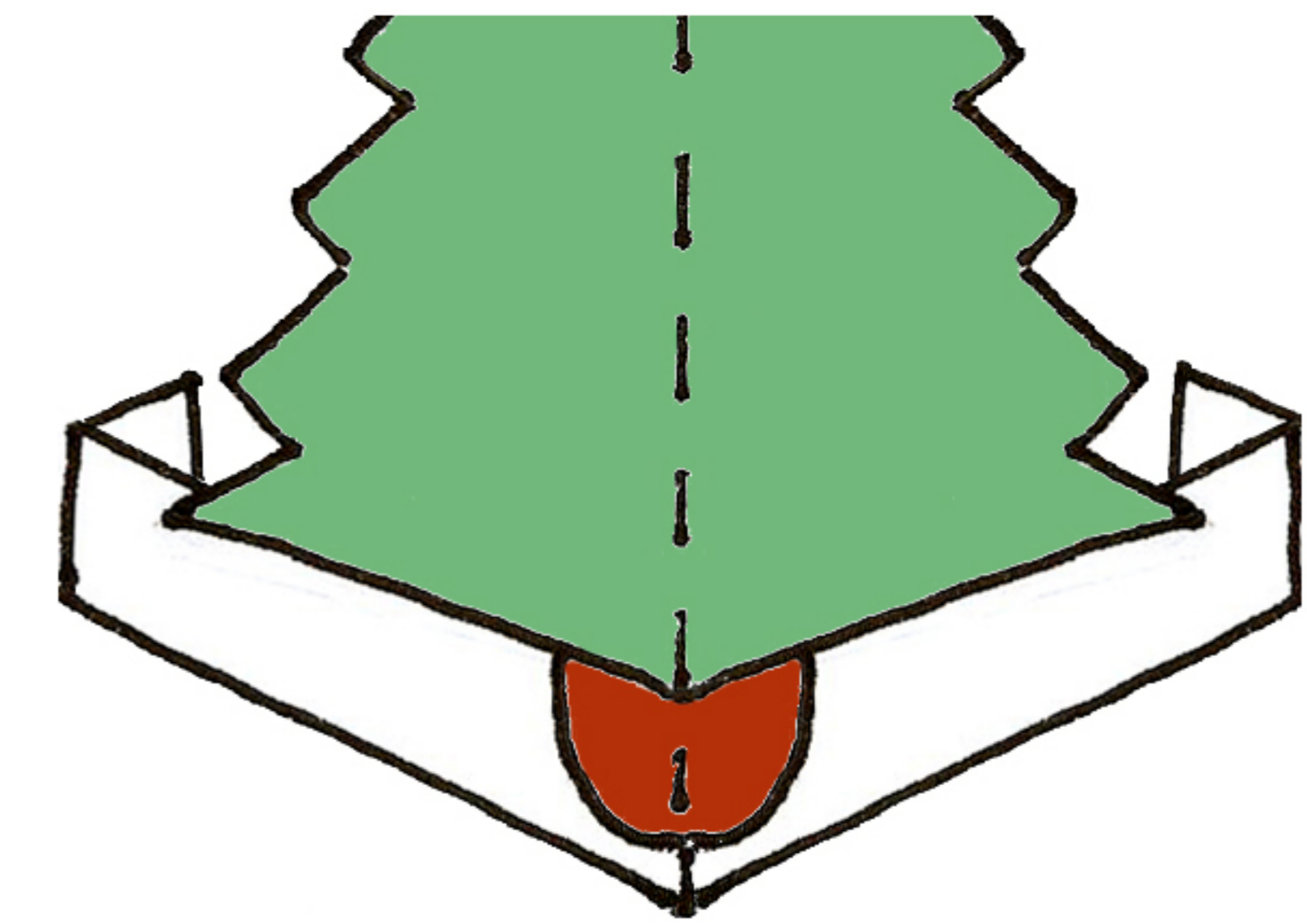
Step 4 - Carefully fold the tree on its stand in half. Fold it all the way down the middle.



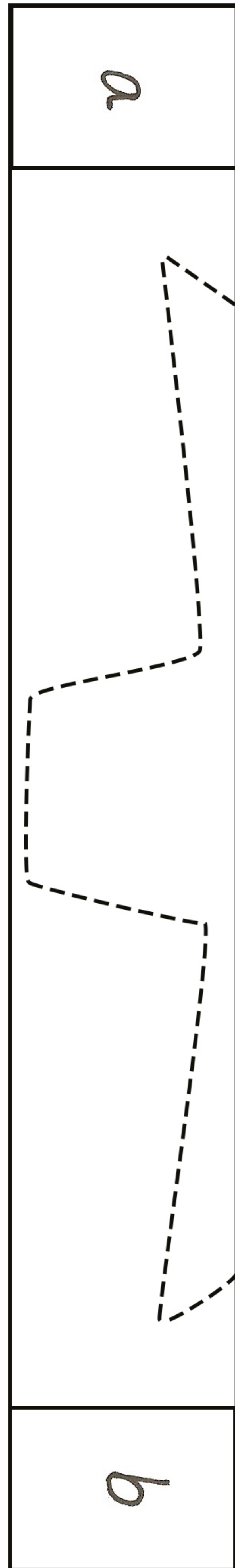
Step 5 - Next, take template 2. Fold this page in half down the centre line to make the card part. Write a message on the blank front of the card.

Step 6 - Fold back the a and b boxes on your stand so that they are tucked in behind the tree.

Step 7 - Glue the box marked 'a' on your stand, to the box marked 'a' on your card, this will now hide both of the a boxes. Making sure your tree is flat, put lots of glue on the b box on your stand, and fold your card closed to glue it in the right place. Flatten your card down nice and firmly to make sure it is all stuck on, when you open your card, your tree should pop out.



Now you can decorate your card as much as you like!



1

Pop-up stand

